

HYDROHEAT

Power Direct Vent Residential Gas Water Heaters 6-Year Limited Tank Warranty • 6-Year Limited Parts Warranty

Side-Mounted Taps Designed For Potable Recirculating Systems

Suitable for potable water heating and space heating.

Matched Components

Apollo power direct vent water heaters are designed for use with Apollo air handlers. A matched system from a single manufacturer.

Power Direct-Vent Design

Two-pipe "closed-combustion" System – Draws combustion air from outside and vents to outside the home. Quiet modular blower for power venting with 3" Schedule 40 PVC, CPVC or ABS piping.

Energy Saving Hot Surface Ignition System

110/120 Volt Electrical System

Rating 3 amps or less, with 7 foot cord, standard 3-prong male connector

Dual Magnesium Anode Rods

For extra protection against corrosion (Models with 3/4" inlet & outlet)

Brass Drain Valve

CSA International Certified E.C.O. (Energy Cut-Off)

Maximum Hydrostatic Working Pressure 150 psi

Temperature-Pressure (T&P) Relief Valve – Installed

Green Choice™ Eco-Friendly Gas Burner

Patented design reduces NO_x emissions by up to 33%, complies with southern California and Texas requirements.

Longer Lasting PEXAN™ Cold Water Tubes

Apollo's cold water inlet tubes (dip tubes) are made from Everlast PEXAN™ a cross-link PEX polymer that can withstand long-term exposure to water temperatures up to 400°F.



Code Compliance

All models meet or exceed federal minimum energy standards effective January 20, 2004, according to the latest editions of the National Appliance Energy Conservation Act (NAECA). They also comply with the latest editions of the B.O.C.A. National Codes, C.E.C., U.B.C., S.B.C.C., C.A.B.O. and the H.U.D. Standards. All models are design-certified by CSA International, according to ANS Z21.10.1 or Z21.10.3 standards governing storage-type water heaters.



The Smart Way To Heat

apollo
HydroHeat & Cooling
A DIVISION OF STATE WATER HEATERS

HYDROHEAT

Power Direct Vent Residential Gas Water Heaters
6-Year Limited Tank Warranty • 6-Year Limited Parts Warranty

SPECIFICATIONS

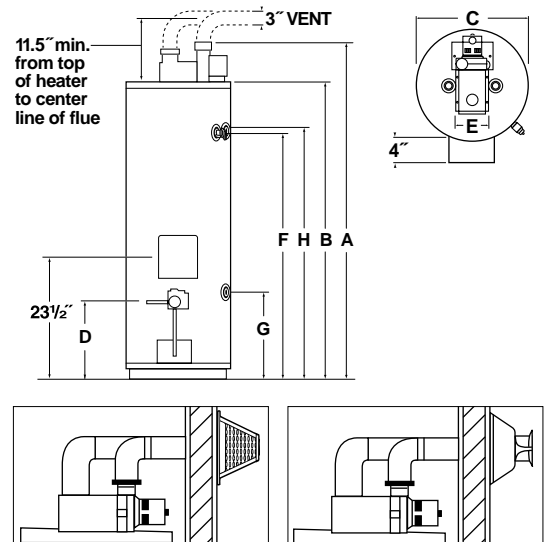
Model Number	Gal. Cap.	Energy Factor	BTU Input Per Hour Nat./Propane	BTU Output Per Hour Nat./Propane	First Hour Rating	Recovery—GPH Degree Rise		Dimensions In Inches								Approx. Ship. Wt. (lbs.)
						90°	60°	A	B	C	D	E	F	G	H	
A6 40 XBPDT L	40	.59	40,000/36,000	30,400/27,360	72	41/37	61/55	57	48½	21	15	8	42	17	42	224
A6 50 XRPDT L5	50	.58	65,000/60,000	47,450/43,800	80	64/59	96/88	69½	61	21	15	8	54½	17	54½	232
A6 75 XRPDT L	75	.53	70,000/65,000	53,200/49,400	123	72/67	107/100	71½	61½	26¼	15½	8	54½	17	54½	352

First hour ratings & recoveries are rounded to nearest gallon.
All models have ¾" male inlet and outlet connections.
When ordering propane, change "X" to "C" in model number (Example: A6 40 CBPDT L).

Venting System Requirements

- The water heater requires its own (separate) venting system.
- Venting cannot be connected to existing vent piping or chimney.
- Venting must terminate horizontally through side wall or vertically through the roof to the outdoors.
- For venting, 3" Schedule 40 PVC, CPVC, ABS pipe can be used.
- Horizontal runs must be secured at 3½' intervals and vertical runs secured at 5' intervals.
- Vent piping cannot under any circumstances be run downhill.
- Horizontal runs require a minimum ¼" rise per 5 feet.
- Total vertical and horizontal runs cannot exceed 45' with one elbow.*
- To comply with ANSI Standards install vent piping so that it can be visually inspected.
- Power Direct-Vent terminal shall terminate at least "A" below, "A" horizontally or "A" above any door, window or gravity air inlet into the building.
"A" = 9" (50,000 BTUH input or less) "A" = 12" (over 50,000 BTUH input)
- For models over 50,000 BTUH, 5' of 3" ABS vent pipe is supplied and must be used for the first 5' of the exhaust outlet vent system.

*If more elbows are required, the venting distance must be reduced 5' for every 90° elbow.



Part #9003328

Optional Deluxe Square
Horizontal Vent Termination Kit

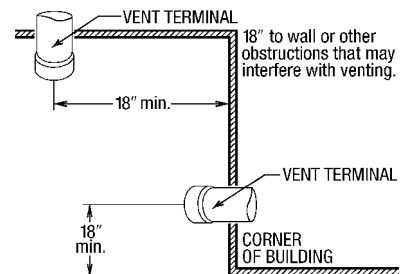
Part #9002749

Optional Deluxe Round
Horizontal Vent Termination Kit

IMPORTANT! Combustion Air And Ventilation Requirements For Power Direct Vent Water Heaters

- 18" minimum in all directions from any obstructions that may interfere with ventilation.
- 0" clearance for 3" PVC, ABS or CPVC Schedule 40 piping from combustible surfaces.
- 12" minimum from the ground and corners, 9" ceiling overhangs.
- The Power Direct Vent outlet terminal shall terminate at least 36" above any forced air inlet located within 10 feet.
- The Power Direct Vent outlet terminal of 50,000 BTUH input models or less shall terminate at least 9" below, 9" horizontally from or 9" above any door, window or gravity air inlet into the building.
- The Power Direct Vent outlet terminal of over 50,000 BTUH input models shall terminate at least 12" below, 12" horizontally from or 12" above any door, window or gravity air inlet into the building.
- 18" minimum from other natural draft (gravity) direct vent, power vent or power direct vent appliance inlet and/or outlet vent(s) when directly above or 135° to either side of center line.
- 24" minimum from any appliance inlet and/or outlet vents when directly below or 45° to either side of center line.
- The location selection must provide clearances for servicing and proper operation of the water heater.

- Vent termination must not be within 4 feet of any items such as gas meters, gas valves or other gas regulating equipment.



Optional Circulating Loop Fittings Package, Part No. 9002604

Circulating Loop Fittings Package includes assembled di-electric unions and full port shut-off valves. A standard hose-connect drain valve is included for field installation. Specially designed for use on side tap recirculating water heaters. Kit must be ordered through Service Parts Department.

In keeping with our policy of continuous product improvement we reserve the right to make changes without prior notice.

For Additional Information: www.apollohydroheat.com

APOLLO HYDROHEAT & COOLING
500 Lindahl Parkway, Ashland City, TN 37015

ORG-SS001-0305N

©2005 Apollo HydroHeat & Cooling

Printed in U.S.A.

