

HYDROHEAT

Standard Vent Residential Gas Water Heaters
6-Year Limited Tank Warranty • 6-Year Limited Parts Warranty

New Models Available With C3 Technology™

Side-Mounted Taps Designed For Potable Recirculating Systems

Suitable for potable water heating and space heating.

Matched Components

Apollo standard vent water heaters are designed for use with Apollo air handlers. A matched system from a single manufacturer.

Piezo Ignitor

For easy pilot ignition (C3/FVIR Models)

Dual Magnesium Anode Rods

For extra protection against corrosion (Models with ¾" inlet & outlet)

Brass Drain Valve

CSA International Certified E.C.O. (Energy Cut-Off)

Maximum hydrostatic working pressure 150 psi

Temperature-Pressure (T&P) Relief Valve – Installed

Green Choice™ Eco-Friendly Gas Burner

Patented design reduces NO_x emissions by up to 33%, complies with southern California and Texas requirements.

Longer Lasting PEXAN™ Cold Water Tubes

Apollo's cold water inlet tubes (dip tubes) are made from Everlast PEXAN™ a cross-link PEX polymer that can withstand long-term exposure to water temperatures up to 400°F.



Code Compliance

All models meet or exceed federal minimum energy standards effective January 20, 2004, according to the latest editions of the National Appliance Energy Conservation Act (NAECA). They also comply with the latest editions of the B.O.C.A. National Codes, C.E.C., U.B.C., S.B.C.C., C.A.B.O. and the H.U.D. Standards. All models are design-certified by CSA International, according to ANS Z21.10.1 or Z21.10.3 standards governing storage-type water heaters.



The Smart Way To Heat

apollo
HydroHeat & Cooling
A DIVISION OF STATE WATER HEATERS

HYDROHEAT

Standard Vent Residential Gas Water Heaters
6-Year Limited Tank Warranty • 6-Year Limited Parts Warranty

SPECIFICATIONS

Model Number	Gal. Cap.	Energy Factor	BTU Input Per Hour Nat./Propane	Recovery Efficiency	First Hour Rating	BTUH Output Nat./Propane	Recovery—GPH Degree Rise		DIMENSIONS IN INCHES								Draft Hood Outlet	Approx. Ship. Wt. (lbs.)
							90°	60°	A	B	C	D	E	F	G	H		
A6 40 YBRT L4	40	.59	40,000/37,000	74%	71	29,600/27,380	40	60	59½	55½	18½	13½	8	49	14½	49	3-4"	135
A6 40 YOCT L*	40	.62	40,000/37,000	76%	71	30,400/28,120	41	60	59½	55½	20½	13½	8	49	14½	49	3-4"	137
A6 40 YRRT L	38	.60	50,000/47,000	71%	88	35,500/33,370	48	71	58½	54¾	20½	13½	8	49	14½	49	4"	138
A6 50 YRRT L	48	.58	50,000/45,000	76%	90	38,000/34,200	51	77	60¾	56½	20	13½	8	50¼	14½	50¼	4"	172
A6 50 YRRT L5	50	.58	65,000/55,000	77%	93	50,050/42,350	67	100	63¾	59½	22	15½	8	54	14½	54	4"	195
A6 65 XRRT L ⁺	65	.55	65,000/55,000	76%	112	49,400/41,800	67	100	63¾	59½	22	15	8	53¾	15½	53¾	4"	215
A6 75 XRRS L ⁺	74	NA	75,100/75,100	80%	NA	60,080/60,080	77	115	61	57	26½	14¾	16	50¼	15½	50¼	4"	265

Recoveries are based on natural gas BTU rate and are rounded to nearest gallon.

*Not equipped with C3 Technology™.

†Provision for 3" or 4" vent.

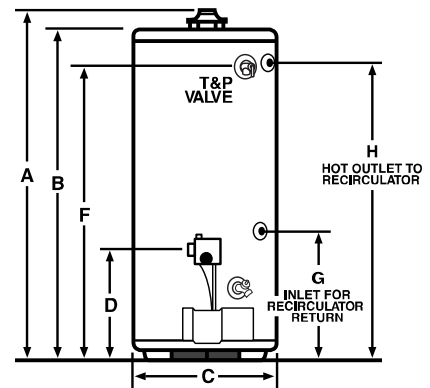
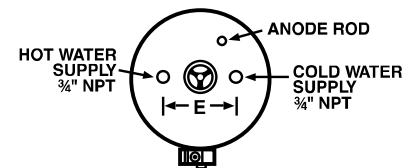
*California Energy Commission – Title 24

Side ports for space heating are ¾" NPT.

When ordering propane, change "Y" to "H" or change "X" to "C" in the model number. Examples: A6 75 CRRS L & A6 40 HBRT L4

Optional Circulating Loop Fittings Package Part No. 9002604

Circulating Loop Fittings Package includes assembled di-electric unions and full port shut-off valves. A standard hose-connect drain valve is included for field installation. Specially designed for use on side tap recirculating water heaters. Kit must be ordered through Service Parts Department.



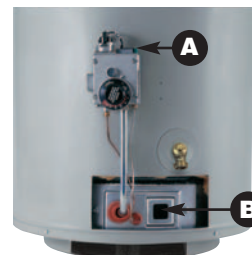
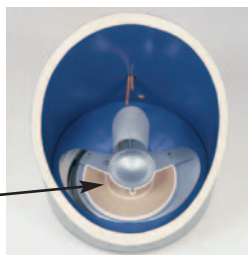
Flammable Vapor Ignition Resistant C3 Technology™ Water Heaters



Corderite Combustion Containment (C3) design meets American National Standards Institute standards (ANS Z21.10.1) that deal with the accidental or unintended ignition of flammable vapors, such as those emitted by gasoline.

Covered by four U.S. patents, C3 Technology™ gas water heaters feature a sealed combustion chamber with air intake screen and a fireproof Corderite flame arrester built into the water heater base. In addition, a Thermal Cutoff (TCO) device, integral with the thermocouple, is designed to shut off gas flow to the burner and pilot if poor combustion is detected. See chart above for C3 Technology™ water heaters.

In the unlikely event that flammable vapors accidentally enter the combustion chamber, the Corderite flame arrester is designed so any flames burn off the top surface and cannot escape down through the arrester.



- A. Easy-to-light Piezo Ignitor
- B. View port for easy inspection of burner inside sealed combustion chamber

In keeping with our policy of continuous product improvement we reserve the right to make changes without prior notice.

For Additional Information: www.apollohydroheat.com

APOLLO HYDROHEAT & COOLING
500 Lindahl Parkway, Ashland City, TN 37015